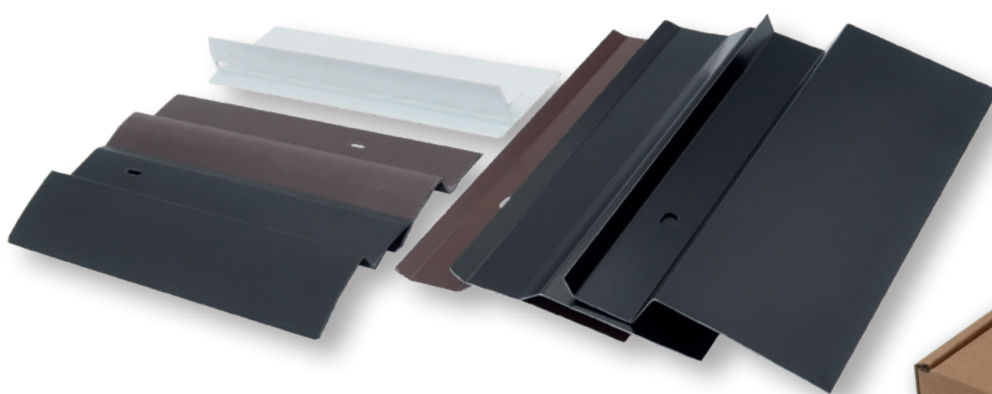


PM ASSEMBLY SERIES

PM EDGE PROFILES | PM MOUNTING KNOBS WITH STEEL NAILS | PM BUTYL ADHESIVE TAPE | PM POWER FIX



PM-edge profiles

An edge profile is used as the top finishing element on dimpled and drainage membranes. It reliably prevents stones and soil from falling behind the dimpled sheet. The profile is equipped with pre-punched holes, so that it can be securely fastened to the masonry. The plastic profile can be used in a non-visible area. However, the metal version should be selected if it will be permanently exposed to UV light.

Technical Data

Plastic version

Material	PVC
Colour	black or brown
Dimensions	approx. 65 mm x 2.00 m for dimpled sheets up to 10 mm thickness
Mounting	Punched slots prevent the profile from bulging due to thermal expansion
Delivery format	20 pieces in bundle

Metal version

Material	Galvanised steel sheet, painted with PE paint protection foil on the outside
Colour	black or brown paint
Dimensions	approx. 115 mm x 2.00 m for dimpled sheets up to 10 mm thickness approx. 110 mm x 2.00 m for dimpled sheets up to 20 mm thickness (black)
Mounting	Punched holes The PE paint protection foil remains in the profile after filling and protects the paint. After the pit is filled, the paint protection foil can be removed by pulling it off evenly at a right angle.
Delivery format	10 pieces in bundle

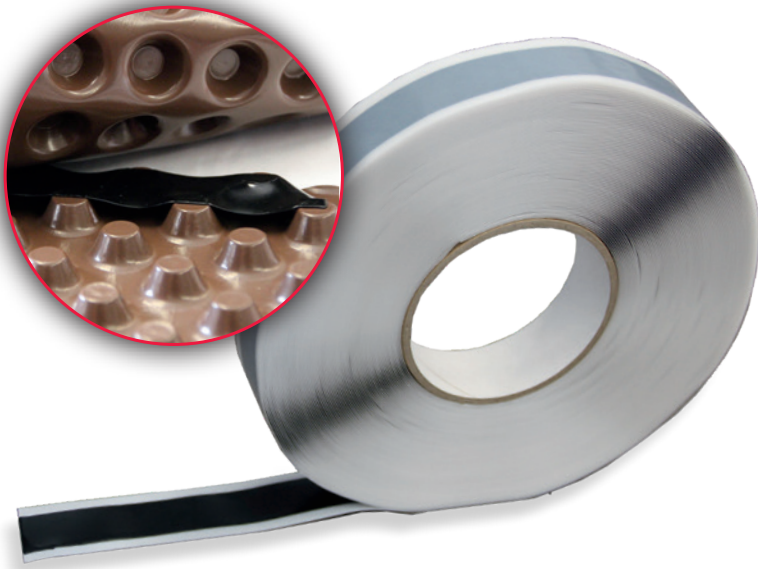
PM mounting knobs with steel nails

The steel nails and mounting knobs can be used to efficiently install dimpled sheets and fasten them to concrete and masonry. The mounting knobs prevent the dimpled sheets from tearing out.

Technical Data

Mounting knob material	HDPE
Nail material	Tempered steel, galvanised
Size	1) for an 8 mm high dimpled sheet 2) for an 20 mm high dimpled sheet
Colour	black
Delivery format	Package of 100 pieces

PM ASSEMBLY ACCESSORIES



PM BUTYL ADHESIVE TAPE

High bonding force on both sides, waterproof, self-sealing plastic-elastic butyl rubber mass in a thickness of 0.6 mm with good cohesion and strength and very high resistance to ageing. The PM BUTYL ADHESIVE TAPE is permanently water-resistant. Wind and vapour barriers, underlay sheet in the roof and façade areas, dimpled and drainage membranes and masonry barriers can be sealed and bonded reliably using the product. Ideal for connecting the underlay membrane to rising building components or connecting the PM LDPE VAPOUR BARRIER.



PM POWER FIX

PM POWER FIX is a permanently-elastic glue for bonding and connecting PM LDPE DAMP PROOF COURSE, PM BituV DAMP PROOF COURSE and PM PVC DPC, PMI underlay, waterproof and sarking membranes, PMI air and vapour barriers and PMI dimpled and drainage membranes, and connecting these to masonry, concrete, wood, aluminium, steel, hard PVC and bitumen.

Technical Data

Material	Plastic-elastic butyl rubber mass
Thickness	0.6 mm
Peel strength	≥ 20 N / 25 mm
Colour	black
Separating layer	Siliconised foil can easily be pulled off thanks to overlaps on both sides (finger lift)
Temperature range	-30 °C to +80 °C
Processing temperature	+5 °C to +40 °C
Inner core diameter	76.5 mm
Storage	dry and UV-protected at +5 °C to +25 °C
Dimensions	20 mm x 30 m

Technical Data

Composition	Permanently elastic glue made of specialised rubber, contains solvents. With extremely high bonding force and outstanding resistance to ageing.
Finishing	above +5 °C (ambient and component temperature)
Yield	approx. 7 m/cartridge
Contents	310 ml / 310 g
Temperature range	-40 °C to +80 °C
Shelf life	Use within 24 months with proper storage, store in a cool place.
Preparation time	10 minutes at +5 °C

For more information, visit www.pmi-plast.de